



HOCKEY WALES
HOCI CYMRU

HOCKEY WALES

ANNUAL

REPORT

2020–2021



CONTENTS

INTRODUCTION	— 4
CHAIR & CEO MESSAGE	— 5
ENGAGEMENT	— 6
ACHIEVING POTENTIAL	— 13
THRIVING ENVIRONMENTS	— 20
PARTICIPATION	— 26
PARTNERSHIPS	— 31
FINANCIALS	— 34



INTRODUCTION

Hockey Wales are committed to delivering our strategic intent despite the challenges that a global pandemic has brought us. We continue to be a learning led organisation, adapting to the ever changing world that we now all face.

Whilst some areas of the business have been naturally restricted we have challenged ourselves to adapt our provision enabling other aspects of the business to thrive.

Our strategy drives us to deliver world class hockey experiences, build upon our achievements and continue to ask questions. Our openness; creativity and ingenuity has enabled our organisation to continue to grow and we pride ourselves on being a forward thinking, adaptable organisation always learning from our and your experiences. Whilst our operational model has changed slightly, allowing us to better utilise the skill sets of our team – our ambition and commitment hasn't.

We are becoming more commercially minded, we're generating income to invest in hockey for good and are striving to be carbon neutral by 2030. We welcome the opportunity to work with you to support us to drive change, grow the game of hockey and add value to people's lives through our sport.

CHAIR & CEO MESSAGE

Reflecting on the last 12 months has been quite an emotional process for us, in a year that has seen one of the most unprecedented and extraordinary periods that we may see in our lifetime – we can't help but feel grateful and thankful for all those who have helped, supported and aided us to get through this global pandemic: key workers, scientists and the NHS to name a few.

Since the launch of our strategic intent in 2019 we have spent a year learning and adapting, something we recognised we wanted and needed to do in an ever changing environment. This new approach to working has equipped us well as we navigated our way through a global pandemic. As we slowly return to participating in the sport we all love, we will continue to commit to creating thriving environments; inspiring you to achieve your ambition; provide

opportunities for all and build on some of the excellent partnerships that help make hockey happen. We are extremely grateful to our members and hockey family, who have demonstrated a true sense of loyalty as we have navigated this year together, to ensure a safe return for all. We would like to thank the clubs for their continued support, especially the Covid-19 Officers for their patience, hard work and commitment to our sport.

We would like to take this opportunity to congratulate our Hockey Wales history makers, as we celebrate four welsh players (2 men and 2 women) who have been selected to represent Team GB at the Tokyo Olympics. We wish Leah, Sarah, Rupert and Jacob the very best from Hockey Wales and the Hockey Family. Sport Wales for their continued support and flexibility and to the Welsh Sports Association for their relentless advice and guidance.

Finally, we express our sincere gratitude to the extraordinary team at Hockey Wales. They have been exceptional under incredibly challenging circumstances and have worked tirelessly, supporting each other, demonstrating resilience, commitment and hard work. As you read this report, I hope you enjoy the stories, achievements and milestones and equally reflect, as we have done, on how this has been possible during these unprecedented times.

We are extremely excited for our future, as we build on the success of our elite athletes we are driven to inspire more people to partake in our sport: through volunteering, officiating, playing or spectating. We look forward to being part of this journey with you, the Hockey Family.



Conrad Funnell
Chair



Ria Burrage-Male
Chief Executive Officer

A red-tinted, halftone-style photograph of a hockey player in action, wearing a helmet and jersey, is the background of the page. Overlaid on this are several white geometric lines: a solid curved line on the left, a dashed curved line below it, and two solid diagonal lines crossing the frame. The word 'ENGAGEMENT' is written in white capital letters inside a dark grey rectangular box.

ENGAGEMENT

ENGAGEMENT

HOCKEY WALES MEMBERSHIP 2020-2021



Number of Members	5470*	602	2483	993	1126
Number of Senior Members (18+)	2151*	115	1072	265	467
Number of Junior Members (U18)	2200	188	1164	519	329
Hockey Family	1119*	299	247	209	330
Number of Clubs	64	10	24	17	13

*includes 266 individual members (232 seniors and 34 Hockey Family)



ACHIEVED INSPORT
BRONZE AWARD



7 WALKING HOCKEY SITES

Hockey
YOUNG
AMBASSADORS

Young Ambassador
programme has entered its

8TH YEAR

welcoming

72

YOUNG PEOPLE

in total

Over

500

Young Ambassadors

Approximately

5,840

voluntary hours
across the 8 years

SMASH Hockey
Games you can play anytime, anywhere!

7 BAGS INCLUDING
24 PIECES OF KIT

168

ITEMS OF EQUIPMENT



THE PROGRAMME
HAS NOT BEEN ABLE
TO RUN AS NORMAL
DUE TO THE COVID
PANDEMIC



Flyerz HOCKEY

Whilst we had so many plans in place to get things in motion following the achievement of our Insport Bronze award, COVID certainly put a halt to these developments. Over the last year, we have been working with contacts across the sector to develop a disability inclusive resource activity pack, bespoke for Flyerz.

This activity pack offers an adapted version of the game, so people of all ages and abilities can join in and experience hockey. The creation of the activity cards will enable participants to pick and choose what activity they want to take part in from the exciting diagrams, then there's much more detail on the back of cards for the coaches or facilitators delivering the session.

As we come out of restrictions, we are mindful that not everyone is fully ready to get back to their 'old' lives yet, so we will be introducing the resource gradually and targeting Special Education Needs and Disability (SEND) schools during the new school year.





WALKING

HOCKEY

**WALK YOUR WAY
TO WELLNESS**

The pandemic saw Walking Hockey sessions across Wales come to a standstill due to the demographic of audience that Walking Hockey attracts. During this time we have continued to build on partnerships and develop resources. We now have 7 sustainable Walking Hockey sites across North, South and West Wales, including Caerwent, RCT, Dysynni and Carmarthen.

Dysynni Hockey Club are the newest recruits to Walking Hockey. The club are the first club in Wales to offer Walking Hockey as an alternative way to play, and the club have had a great uptake by current and past members as well as family members of youth players.

As we continue to look ahead to the next year for Walking Hockey, we will be looking to further broaden the amount of sites across Wales with kit packs and resource cards available for any delivery partners looking to engage with the initiative and provide Walking Hockey as an alternative version of the game to a new audience.

'We now have 7 sustainable Walking Hockey sites across North, South and West Wales, including Caerwent, RCT, Dysynni and Carmarthen.'



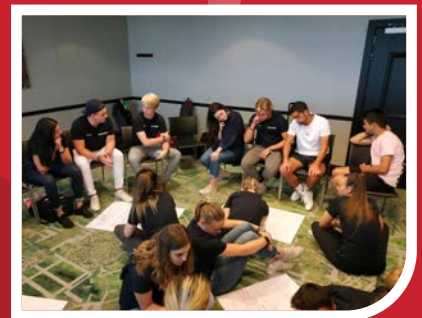
Hockey **YOUNG** AMBASSADORS

A challenging but successful year of providing young people with a voice and platform to learn and develop within hockey through our Young Ambassador programme. As the programme entered its 8th year, we saw 72 young people both new and existing engage in the programme.

The programme kickstarted with Regional Leadership Festivals, but were this time delivered online. Various engagement and learning opportunities were provided throughout the year including Leadership Award in Hockey Coaching, Managing You Through Uncertain Times, Communication and Networking with great engagement from across Wales

Due to the impact of COVID, there were very little voluntary opportunities available to Hockey Young Ambassadors, with some getting creative and delivering online hockey sessions in their club and school settings. The Steering Group once again worked tirelessly throughout the pandemic to ensure engagement with Young Ambassadors during that time remained high.

Hockey Wales also started their European journey with the European Hockey Federation and several other Leadership experts across Europe to develop a European Youth Leadership programme which will provide additional leadership opportunities for our Young Ambassadors.





SMASH Hockey

Games you can play anytime, anywhere!

As part of StreetGames Wales #SportHelps campaign - this National effort looked at providing alternative ways for young people from disadvantaged communities to stay active at home, due to the absence of their regular sports sessions from the lockdowns they've faced over the past year.

StreetGames provided match funding doubling our investment for these young people in the community, so as a result we were able to distribute 7 hockey smash kit bags to different locations across Wales:

- Cardiff
- Blaenau Gwent – Llanhilleth
- Swansea – Manselton
- Llanelli
- Rhondda Cynon Taff
- Gwynedd
- Flintshire

SNAP SHOTS

Blaenau Gwent

Aneurin Leisure's Sport Development team, work in partnership with Clwb Llan to provide health and wellbeing, sport and physical activity opportunities for the families of Llanhilleth.

A doorstep sport club was established with support from the youth services' detached team. A number of sessions would take place throughout the week. The equipment provided by Hockey Wales will provide the participants an opportunity to take part in hockey related activities on a weekly basis once restrictions are eased.

A portion of the equipment is being held back and will be used for the new Sports Library which will be hosted from Llanhilleth Institute. The concept will allow families and young people to sign out pieces of sports equipment

they wouldn't usually have access to. They will be able to sign out an item of equipment, take it away to use at home or in the community and will be required to bring it back after an amount of time. Resources will accompany the equipment to help them use it correctly and to learn new skills.

Swansea

The hockey equipment provided by Hockey Wales will be utilised at Manselton community, a doorstep sport club that is delivered by a number of partners to ensure families and young people from the local community have access to sport and physical activity opportunities. Plans are in place to resume provision after the Easter holidays, where young people will bring their equipment back into the Doorstep Sport Club.



The Hooked on Hoci programme for primary schools has not been able to run as normal due to the COVID pandemic. The usual package includes 6 x coached sessions in school, entry to a local Festival, teacher training and school club link support from Hockey Wales has been on hold.

The Development Team have been busy developing our digital offering and the new Virtual Package will be promoted for schools to use very soon. The Development Team has also promoted various National Challenges with the Wales Senior Women's squad inviting children to take part in Challenges from home. It's been great to see so many children taking part and we can't wait to see you all back on a pitch very soon!

ACHIEVING POTENTIAL



ACHIEVING POTENTIAL HIGHLIGHTS

TEAM GB – 4 WELSH PLAYERS IN THE GB SET-UP



Sarah Jones



Jacob Draper



Leah Wilkinson



Rupert Shipperley

GB ELITE DEVELOPMENT



Rhys Bradshaw



Izzie Howell



GB HOCKEY

Our 4 x GB players have continued to play in Pro-League matches that have taken place in this period. For men and women this meant matches against Belgium and Holland in October/November 2020, and Germany, USA (women) and Spain (Men) in May 2021 before taking a temporary pause with Home Nations activity in June 2021.

During this year we have also had representation on the GB Elite Development programme from Rhys Bradshaw and Izzie Howell.





SENIOR MEN, WOMEN AND U23/U21 PROGRAMMES

We have been thankful this year that, when it has been allowed, we have been able to train and compete at senior level with Elite dispensation being obtained. Our U23/U21 programmes were only able to return to activity in March 2021 as part of this dispensation so they have been training without any real meaningful competitive opportunities to date but we remain hopeful this picture will change as we move more into the summer period.

Whilst Elite dispensation allows our programmes to operate adequately within the Home Nations, unfortunately overseas travel and especially into Europe has provided a real barrier to the usual competitive match opportunities, given multiple travel restrictions and challenges to overcome, none more so than

our part-time players having to isolate on return for a time period. This has seen impact on both men's and women's previously organised trips, with some lateral and creative thinking required to provide match opportunities to the squads.

Senior men's preparations have been focused towards the European Championships in June 2021 but whilst they have been able to pick up matches against GB Seniors and GB EDP programme, they were only able to manage 2 test matches, these coming in Cardiff against Scotland in May 2021, which saw one win apiece for the teams. Notably these matches also saw Lewis Prosser's 150th Cap for Wales and also Fred Newbold's 1st cap.

Senior women are yet to play any capped matches in the last year although have still built up a bank of matches across the year, with matches against English Premier league sides Surbiton and Clifton Robinsons, Scotland women, GB EDP, Cardiff and Met men and UK Armed Services men. Preparations continue towards their European campaign due in the Czech Republic in August.



NATIONAL AGE GROUPS

Again, much like the U23/U21 programmes, National Age Group activity was only able to return thanks to Elite dispensation at the end of March 2021. This gave us the time to undertake a very thorough recruitment process for Head Coaches and Assistant Coaches to fill our new structure, the return of separated U16 and U18 boys and girls squads but remaining connected through programme leadership, philosophy and their transitional nature. We also introduced a new tier of assistants, Pathway Development Coaches, which allows us to expose more coaches that coach in Wales to the Pathway at this level, with a clearly defined and targeted coach development process to support them in this engagement.

Despite the inevitable decision of having to pull out of the Euro U19 Championships and the cancellation of the U16 Euro 5's, we are still able to look forward to a Home Nation fixture programme for both NAGs groups across the summer of 2021 which will ensure our players are still able to experience international hockey at this time, as well as looking forward to our return once again to the UK School Games Hockey competition in September.

Although the majority of the new Regional Performance Centre structure underneath the NAG programme was only able to be held online during this cycle, this important part of the Pathway which allows us to retain and develop a deeper number in the

talent pool, still experienced a glimpse of the future, with positive engagements occurring and the inception of our new holistic education model which we hope will help develop the person behind the player and add far more off pitch support to their development. Guest speakers were engaged to add a different flavour and also from outside of hockey. We are very much looking forward to September and the RPC restart now and the opportunity to see the full value of our relationships with all 3 Regional Centres, at SWNC (Cardiff), Swansea University and Eirias Park (Colwyn Bay) and to make full use of all the training equipment provided through our sponsorship from New World Sport.



PERFORMANCE SUPPORT STAFF

SENIOR WOMEN

Kevin Johnson

Head Coach

Rebecca Daniels

Manager

Moses Lodarmasse

*Senior Assistant Coach
and U23s Head Coach*

Walid Abdo

Assistant Coach

Gareth Terrett

U23s Assistant Coach

Jonny Harper

Physiotherapist

Sam Milner

U23s Physiotherapist

Theo Dowse

GK Coach/Performance Analyst

Ross Hall

Pysch Support

Liam Mickleburgh

S&C Coach

SENIOR MEN

Danny Newcombe

Head Coach

Will Packer

Manager

David Hacker

Senior Men Assistant Coach

Martin Schouten

*Assistant Coach and
U23s Programme Head Coach*

Gwyn Williams

U23s Assistant Coach

Sam Rowe

Performance Analyst

Tom Jenkins

Physiotherapist

Carmen Ansley

Physiotherapist

Keir Starley

GK Coach

NATIONAL AGE GROUP GIRLS

Shelley Robinson

Programme Manager

Elliot Foweraker

U18s Head Coach

Mark Ramage

U18s Assistant Coach

Adam Broomfield

U18s Pathway Development Coach

Mark Ramage

U16s Head Coach

Cheryl Campling

U16s Assistant Coach

Ellie Pye

U16s Pathway Development Coach

Tom Chadwick

Pathway Goalkeeper Coaching Lead

Mark Robinson

Performance Analyst /

Support Coach

Sam Watts

Performance Analyst

Sam Milner

Physiotherapist

Kieran Tuck

S&C Coach

NATIONAL AGE GROUP BOYS

Joe Gleeson

Programme Manager

Mike Williamson

U18s Head Coach

Luke Stone

U18s Assistant Coach

Jasminder Singh

U18s Pathway Development Coach

Lee Marshall

U16s Head Coach

Mohamed Samak

U16s Assistant Coach

Ieuan Bartlett

U16s Pathway Development Coach

Paul Dunleavy

Performance Analyst

Carmen Ansley

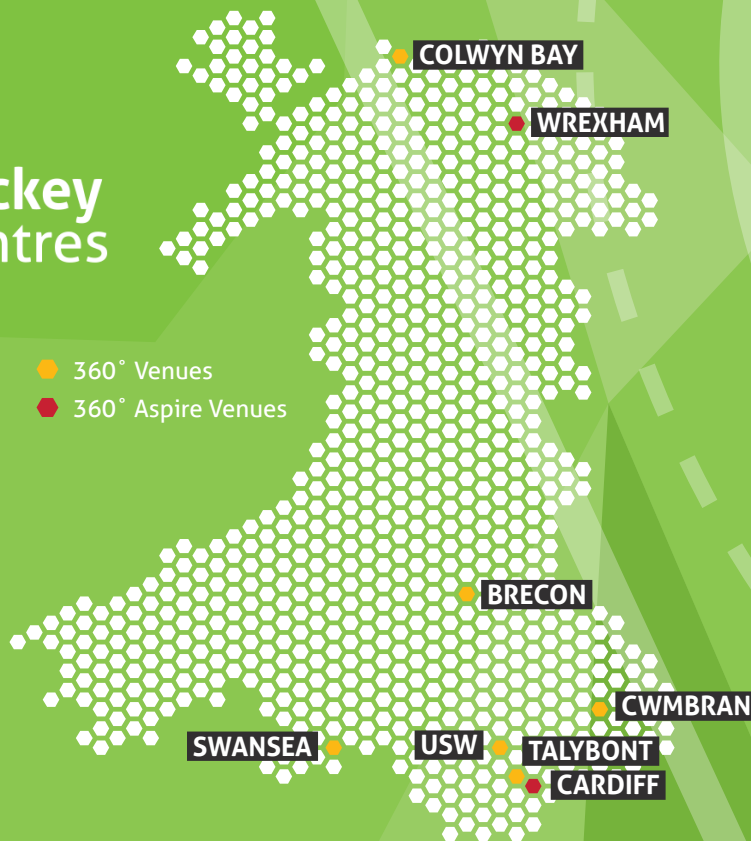
Physiotherapist



Performance Staff - Senior Women



Performance Staff - Senior Men



Due to COVID, Hockey Wales had to make the tough decision in September 2020 to suspend all pathway activity until January 2021 in light of the welfare and safety of all players involved across Wales.

As we approached January 2021 we knew we would have to

delay the start to a future date due to the risks associated with bringing players together to one environment.

After much planning, a programme of a 10 week summer block began in April 2021, engaging over 200 players across Wales, being facilitated by over 20 coaches.

Despite this not being the normal period of time for 360 to be delivered, the parents, guardians, players, coaches and support staff involved have positively embraced the opportunities on offer and have engaged in a great 360 programme.

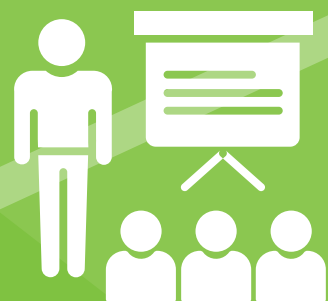
MARCH 2021



213
PLAYERS
across
8
VENUES



21
REGULAR
COACHES
delivering across
the centres



Dedicated
S&C
LEAD
for the programme

The background is a vibrant yellow with a fine halftone dot pattern. A white silhouette of a hockey player is positioned in the center, facing right. Overlaid on this are several white geometric lines: a solid diagonal line from the top-left to the bottom-right, a solid curved line on the right side, and a dashed curved line that follows a similar path to the solid one but is offset. The text 'THRIVING ENVIRONMENTS' is centered horizontally and partially overlaid by these lines.

THRIVING ENVIRONMENTS

THRIVING ENVIRONMENTS HIGHLIGHTS

COACHING



11

ON-LINE LEADERSHIP AWARD
IN HOCKEY COACHING DELIVERED TO

102

ATTENDEES



206

COACHES AFFILIATED ACROSS WALES



**Sports
Leaders**

Our Leadership Award in Hockey Coaching
comes with Sport Leaders accreditation.

UMPIRING



18

ON-LINE LEVEL 1 UMPIRE COURSES
DELIVERED TO

56

ATTENDEES



288

UMPIRES AFFILIATED ACROSS WALES



COACH DEVELOPMENT

Towards the end of 2020, we replaced the 1 x nationwide full time coach developer position with 3 x roles to be fulfilled on a part-time basis which we felt better suited our strategic and operational needs in this area. This also provides a regional level of support which is based around our 3 Regional Performance Centres across our player pathway. We appointed Jon Evans (South West), Walid Abdo (South Central) and Tim Hoare (North).

Each of the three have National objectives to meet and lead on as well as supporting the Regional needs and are primarily tasked with working to increase and support our coaching workforce across Wales, helping to deliver on our strategy to identify, develop and support coaches from currently under-represented groups, supporting our Pathway coaches and providing a bespoke development programme for them and to keep supporting our clubs

and community. In addition to this our coach developers continue to work with the Great Britain Coach Development team and play their part in this wider piece as a home nation.

National projects and initiatives we have already been working on or towards in 2021:

- Creation of a bespoke development curriculum for different levels of coaches in Wales, as well as working with partner institutions.
- Female coaches project – have already held a very positive forum with which we have taken on important points raised and are now creating a more formalised programme for the future to support the development of more female coaches in Wales.
- National Coaching Survey – reaching out and gathering insight from membership to help shape and inform our future strategic direction.

- Pilot scheme for Club Coach Developers – our hope is to create coach development contact points at as many clubs in Wales as we can and extend our network. This is currently being piloted at a number of clubs before we roll out wider in future months.

- Performance Pathway coach support programme – all National Age Group coaching staff have received a bespoke development package which includes targeted work and support with their designated coach developer and also engagement on a monthly basis as a group with guest speakers and other interaction opportunities.

Coach Education continues to be aligned to Great Britain Coach Development and through the Hockey Hub but over the last year many engagements have either been adapted to online based content or cancelled/postponed.



LEADERSHIP AWARD IN HOCKEY COACHING

During the first lockdown, no one could have predicted what the effects of COVID would have been and how long we faced such uncertainty. During the summer of 2020, we decided to move the Leadership Award in Hockey Coaching online to break down the barriers that the pandemic had subsequently left us to deal with. With no face to face interactions possible, we moved the content online using new applications that all members of staff had to get accustomed to, to move with the everchanging times.

Through this process, we were able to embed disability inclusion within the new content, which continues to enable us to send a key message to all our aspiring new coaches that inclusivity starts from grassroots and we want all our clubs to be as accessible as possible.

In October 2020, to prepare for the initial launch of the online version, we went out to advert to recruit tutors to deliver our new course. In November, we appointed 9 tutors who have a huge depth of knowledge in sport development and a passion for hockey and they are committed in helping us shape the coaches of the future.

Since the launch we have had 108 candidates take part in the theory online, showing that this new era of online learning has been a very effective tool for us to develop. To enable all the candidates to complete their award, they will attend a follow up practical session with our tutors and with the support of our coach developers to get them on their coaching journey. That means more than 540 hours of coaching will be taking place over the coming months, so participants can achieve their certification in the award.



WALES HOCKEY UMPIRES ASSOCIATION ANNUAL REPORT

Over the last year WHUA activity has, like everything else, been curtailed. One major development that we have achieved over the last eighteen months was moving the level one course online. Using online e-learning platforms we have managed to develop the course into a series of interactive online workshops. The major benefits of this method of delivery have been that we are no longer limited to having a minimum number of people in an area to run a course, wherever you are living you can now log in and access the content. At the end of the lockdown periods, we have also been offering assessments wherever we could, and we would urge clubs, that if you are arranging friendlies over the summer period and have part qualified umpires that need assessing then please get in touch.

We have successfully applied for some funding that we are going to use to start developing a 'Club Umpire Developer' course, the aim of which is to enable clubs to support their new umpires while they are undertaking their training. We are hoping to roll this out in time for the new season.

Again, both our umpires and officials were lucky enough to have more than our fair share of appointments from the EHF. These would have seen the likes of Megan James and Jono Goold attending their first tournaments. Unfortunately, the vast majority of these have been cancelled or have been withdrawn due to the national teams being withdrawn. Hopefully, it will not be too long before these umpires and officials get their chance to represent Wales and the WHUA at

a European level. With the lifting of lockdown, we did see Wales play some tests against Scotland in Cardiff and congratulations must go to Luke Rees who umpired his first test match.

Fingers crossed, next season will see our usual activities return and allow our umpires and officials to attend tournaments again.





FACILITIES

Hockey Wales continues to recognise the fundamental role that Thriving Environments have on an individual's enjoyment of the sport, so we work extremely closely with partners and members alike to ensure that access to high quality facilities is a reality throughout Wales. Since the last Annual Report, we have worked closely with partners to see significant progress in a number of locations, including:

- **Pwllheli** – Brand new Artificial Turf Pitch installed at Clwb Hoci Pwllheli operating as the only full-size hockey facility on the Llyn Peninsula.
- **Welshpool** – Following challenges at the venue, we worked closely with Powys County Council who replaced the old surface with a brand new one earlier this year.

- **St John Lloyd School, Llanelli** – Through our work as part of the Facilities Collaboration Group we secured funding for a new hockey pitch in South West Wales which will be essential provision for the town of Llanelli.
- **Sue Noake Leisure Centre** – Further funding from the Facilities Collaboration Group has resulted in a resurface of the Artificial Pitch at Sue Noake Leisure Centre which is a crucial facility for the local community.

We are also pleased to announce that the following venues are all FIH accredited:

- Ysgol Gymraeg Bro Dur, Swansea.
- Pencoed Comprehensive School, Bridgend.
- Plas Ffrancon Leisure Centre, Bangor.
- Plas Silyn Leisure Centre, Caernarfon.

- Swansea University Sports Village Pitch 1, Swansea.
- Ysgol Caer Elen, Haverfordwest.
- Flash Leisure Centre, Welshpool.
- Ysgol Y Preseli, Pembrokeshire.

The introduction of Gen 2 playing surfaces, some of which have already been installed in Wales, enable communities to benefit from a playing surface that caters for netball, tennis and hockey on one facility. This versatility enables leisure providers to generate commercial revenue from a number of sports whilst allowing hockey to continue to thrive as a sport.

We do recognise that there is more to a Thriving Environment than just the playing surface, so continue to work extremely closely with facility providers to develop the whole experience, from spectator viewing areas, to car parking and refreshment provision on site.

The background of the page is a stylized, high-contrast image of a hockey rink. A large, white, semi-transparent letter 'P' is superimposed over the center of the rink. A dashed white circle is also visible, centered on the 'P'. The overall color scheme is a mix of olive green and brown tones.

PARTICIPATION



WALES MASTERS – WOMEN OVER 35s, 40s, 45s, 50s, 55s and 60s

The 2020 Masters season for the ladies saw the Home Nations tournament for all age groups in Edinburgh cancelled due to the COVID Pandemic, this was also the case for the O35's O40's World Cup due to be held in Nottingham in August 2020 and the O45's O50's O55's and O60's who were due to go to South Africa in September 2020.

Both of these tournaments were rearranged to 2021 at the same locations however due to the on-going situation they were once again cancelled, with the World Cup being moved to 2022 in Nottingham and South Africa. The Home Nations tournament will now be held in Nottingham in 2022 which will be the last time the ladies tournament will be held with all age groups together, due to the number of age groups now entering. Facilities that can hold this size of tournament over three days in Wales, Scotland and Ireland are not available.

We have managed to arrange two international friendlies for all age groups in Nottingham from August the 14th – 16th 2021 games will be against England and Scotland and there will be a friendly against an English regional side this has been possible due to lockdown easing for the three nations with Ireland not able to compete due to on-going restrictions within their country.



WALES MASTERS – MEN

OVER 35s, 40s, 45s, 50s, 55s, 60s, 65s and 70s

Training sessions and warm up games have started in preparation for the friendlies with players being eager to dust off their sticks and get back on the pitch and play Hockey.

As a result of the pandemic, no international or representative fixtures were played by any of our age groups. However, once hockey was allowed again in England in early summer 2020 a mini informal masters league was set up, centred on Hampshire, giving Welsh Dragons the opportunity to play in a 60+ side but, more importantly for the future, an Apprentice Dragons side was created for O50s and 55s and it is hoped that in the long term this will widen the player base and enable Wales to enter World and European Spirit of Masters events in these age groups.

Although all the World Cups scheduled for Nottingham, Cape Town and Tokyo were cancelled last year, it was hoped that as lockdown rules eased there would be an upsurge in events, but the ongoing uncertainty about the spread of the coronavirus and difficulties with foreign travel have meant a number of these tournaments have already been cancelled. However, some international events remain in the calendar and our fingers and sticks are crossed that they will go ahead:

- August - Four Nations international tournament at Nottingham for O35/40/45/50/55/60s, in most cases involving England, Ireland, Scotland and Wales.
- August - Celtic Cup in Belfast for O60/O65/O70s involving Ireland, Scotland, Wales and France. Wales are the current holders at both O65 and O70 levels.
- October/November - O35s home and away internationals v England at Marlborough College and Cardiff.
- November - O75s Four Nations international tournament in Cardiff involving Wales, England, the Netherlands and Scotland. This will be an auspicious occasion featuring the first internationals for our newly formed O75 side and may well be the first O75 Four Nations event in the UK.



COMPETITIONS 2020/2021

No Hockey Wales Cup Competitions played in 2020/2021

CLUB COMPETITIONS

July 2020

Full programme planned

October 2020

Indoor Cup, and Trophy & Challenge Competitions cancelled

January 2021

Championship & Masters Competitions, all Youth Competitions and all School Competitions cancelled

EUROHOCKEY CLUB COMPETITIONS

- In January 2020, Cardiff & Met and Swansea qualified for the 2021 EuroHockey Indoor club competitions.
- The 2021 EuroHockey Indoor competitions were cancelled - Cardiff & Met and Swansea will represent Wales in the 2022 EuroHockey Indoor competitions.
- The 2019/2020 HW Championship competition was not completed
- At the HW Championship finals in 2019, Cardiff & Met (Men), Whitchurch (Men) and Gwent (Ladies) qualified for 2020 EuroHockey Outdoor club competitions.
- In addition, Swansea (ladies) HC, our highest ranking EHL team, automatically qualified.
- The 2020 competitions were cancelled and with no HW competitions in 2020/2021, all 4 teams were invited to represent Wales in the 2021 EuroHockey club competitions.
- The 2021 EuroHockey club competitions have been postponed from April/May to September/October.



HOCKEY WALES VIRTUAL WELSH CUP

Due to the COVID pandemic, no formal competitions were able to take place across the 2020/21 season. To keep clubs engaged the Virtual Welsh Cup was developed for clubs and secondary schools:

CLUB HEADLINE STATISTICS FOR 2020/21:



WINNER

BUCKLEY HOCKEY CLUB

32 **32,377**
TEAMS VOTES

1,435,804
IMPRESSIONS

59,598
ENGAGEMENTS

SECONDARY SCHOOL HEADLINE STATISTICS FOR 2020/21:



WINNER

CASTELL ALUN HIGH SCHOOL

32 **26,320**
TEAMS VOTES

1,011,145
IMPRESSIONS

54,382
ENGAGEMENTS



PARTNERSHIPS

PARTNERS

We would like to thank our Partners for their support



BluefinSport



European Hockey Federation



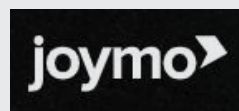
International Hockey Federation



sportwales
chwaraeon cymru



For mental health and social change

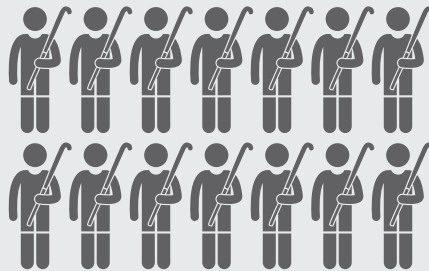


A big thank you to Irfon Bennett who continuously captures those special moments with his photography skills.



KIT DONATIONS

We have made kit donations to **BRIDGEND, COWBRIDGE** and **DOWLAIS**
ENJOY!



277
MEMBERS



MONTHLY DRAW

48 **37** **11**
MONTHLY PRIZE DRAWS INDIVIDUAL WINNERS CLUB WINNERS

PROJECTS 2020 – 2021



RECOGNISE ACHIEVEMENT

Fund 'The Peter English Award' at the Hockey Wales Awards **WINNER – FFION ROSS**



INTERNATIONAL CAPS

Sponsor **WALES SENIOR INTERNATIONAL CAPS**
1st, 50th, 100th and 150th



Our Facebook page has
238 LIKES & 251 FOLLOWERS
Friends of Welsh Hockey



Our Twitter account has
311 FOLLOWERS
@Friends of WH



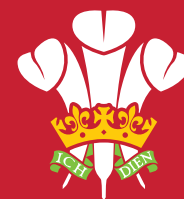
Our Instagram account has **119**
FOLLOWERS & 101 POSTS
friends_of_wh

FINANCIALS



HOCKEY WALES
HOCI CYMRU

FINANCIALS 2020 – 2021



HOCKEY WALES
HOCI CYMRU

ANNUAL ACCOUNTS

A full report will be made at the GM following approval of the accounts at the next Board meeting, so the following information is purely an overall summary of the financial year based on the draft accounts.

BALANCE SHEET

Reserves increased by £38k to a level of £194k and although the level is increasing in line with requirements is still a little way short of the ideal level in line with our risk assessment. The level is also below other NGB's of a similar size.

Debtors decreased by £39k, primarily due to overdue funds having been received from international squad members. Under the new athlete agreement all senior players were required to cover the indicative costs prior to 31/3/21 which was also deferred to the new financial year.

As can be understood very little international activity took place so a large element of the associated grant has been deferred to 2021/22, as was the 360 Pathway income received in January as the scheme did not start until April 2021.

INCOME & EXPENDITURE

Members will be aware that Board agreed a 50% reduction in affiliation fees which reduced our income to £50k, down from £121k the previous year. No increase of fees are planned for 2021/22 but this will be reviewed for the following year when an increase is anticipated.

As can be imagined, Level 1 umpiring and Leadership award courses have not been able to run in person but following a substantial amount of work on-line versions of both were run which proved to be very popular. Expenditure was minimal in view of little overhead costs in the way of facility hire.

Our insurance was reviewed and following discussions an overall reduction of premium was negotiated together with an increase in cover.

Additional Sport Wales funding was obtained to partially offset the loss of affiliation fees as was a further sum to allow us to 'relaunch' the sport when conditions allow – this sum has also been deferred forward in view of the continued restrictions.



HOCKEY WALES
HOCI CYMRU

THANK YOU

Hockey Wales Annual Report 2020/21.

**Thank you to everyone who has contributed to the report
and to the hockey family for your continued support.**

For more information or to get involved go to:

www.hockeywales.org.uk



@HockeyWales



@hockey_wales



@HockeyWales

Or email us at: info@hockeywales.org.uk

Hockey Wales

Sport Wales National Centre, Sophia Gardens, Cardiff, CF11 9SW.